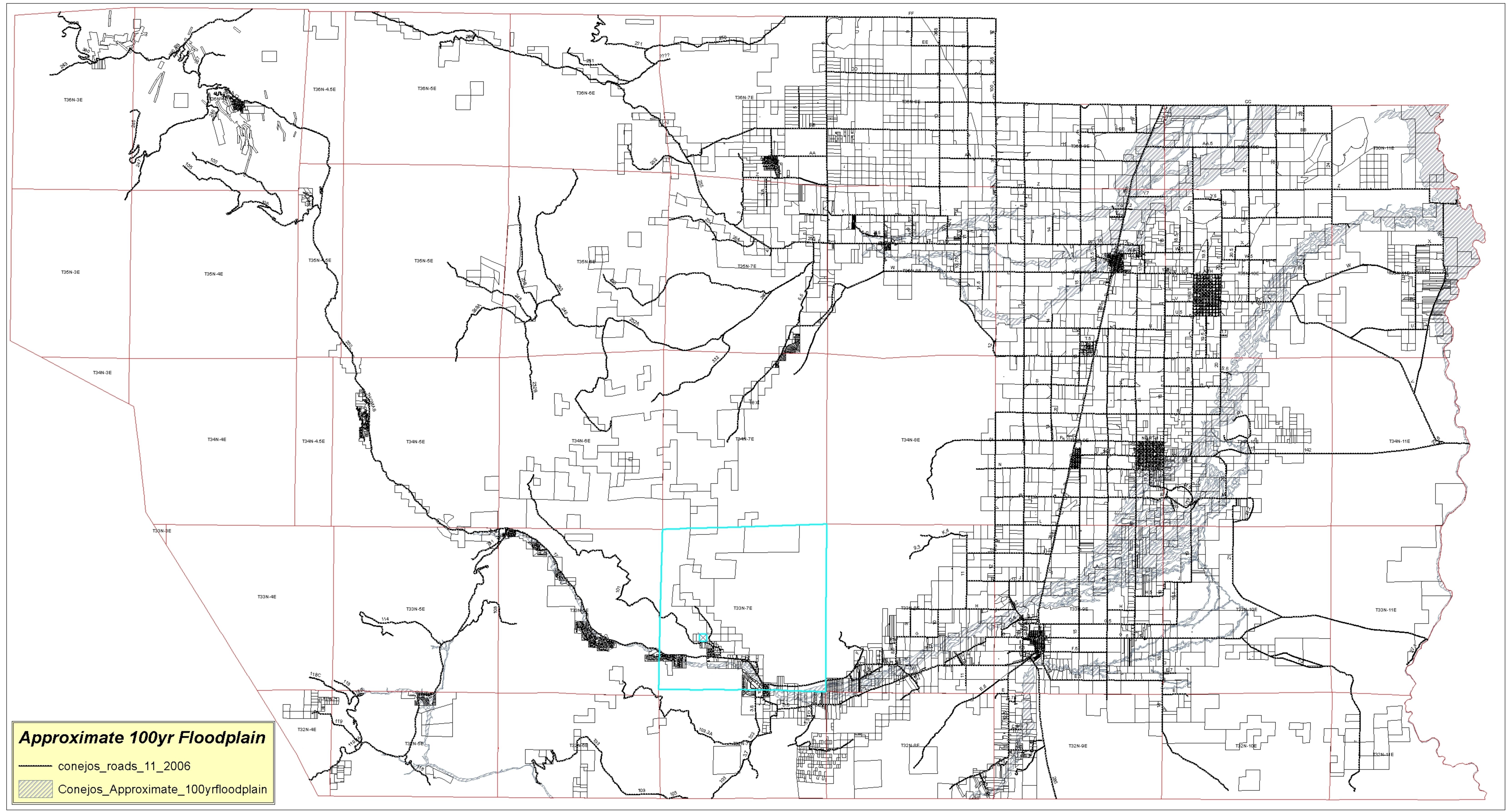
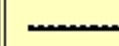



Conejos County Floodplain Map



Approximate 100yr Floodplain

-  conejos_roads_11_2006
-  Conejos_Approximate_100yrfloodplain



This approximate 100 year floodplain area was developed over several years in the 1980's on 1:24,000 quadrangle maps by staff at the Colorado Water Conservation Board (CWCB). This map is approximate and should be used with caution. Conejos County accepts no responsibility for errors or omissions or for the misuse of this map.

